



GAT MONTHLY MEMBERSHIP PROGRESS REPORT

Results as of: 3/31/2026

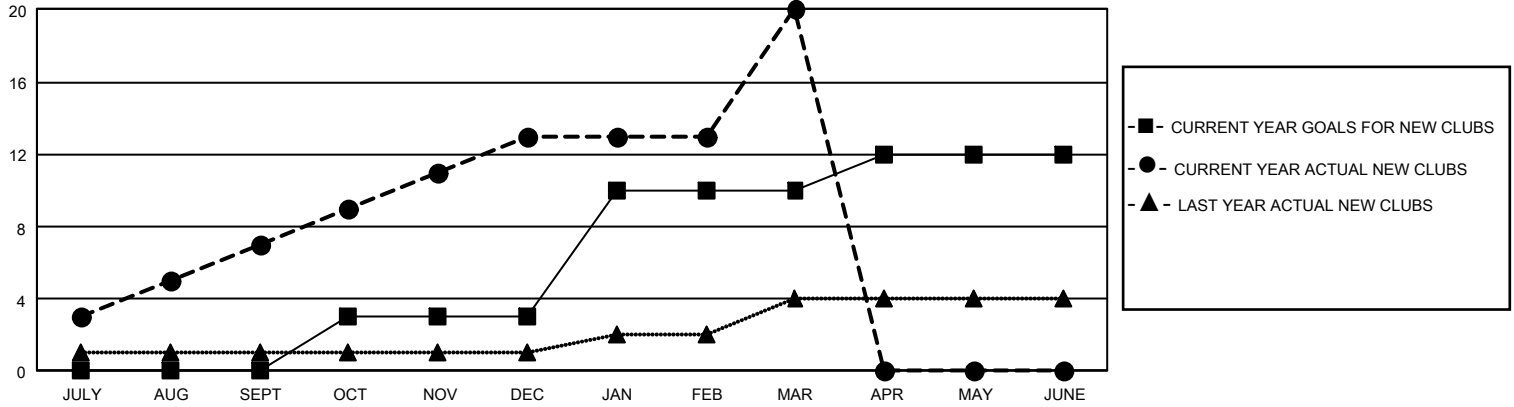
GMT Constitutional Area 5 - J, Group H

REPORT DOES NOT INCLUDE CLUBS IN UNDISTRICTED AREAS.

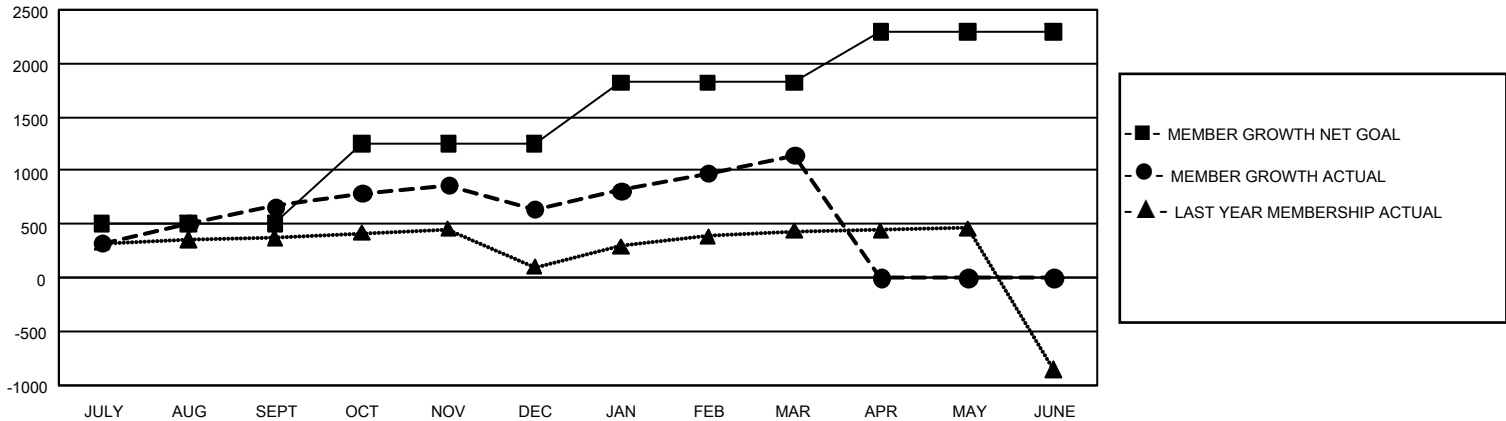
Clubs			
RESULTS FOR 2025-2026			
QUARTER	NEW CLUB GOAL	NEW CLUBS	DROPPED CLUBS
JULY/AUG/SEPT	0	7	0
OCT/NOV/DEC	9	6	1
JAN/FEB/MAR	21	7	1
APR/MAY/JUNE	6	0	0

Members			
RESULTS FOR 2025-2026			
QUARTER	MEMBER GROWTH NET GOAL	MEMBER GROWTH ACTUAL	DROPPED MEMBERS ACTUAL (including transfers)
JULY/AUG/SEPT	507	1,180	443
OCT/NOV/DEC	745	594	592
JAN/FEB/MAR	570	897	358
APR/MAY/JUNE	473	0	0

GOALS AND ACTUAL NEW CLUBS CUMULATIVE



GOALS AND ACTUAL MEMBERS CUMULATIVE



DROPPED CLUBS: 2 DROPPED MEMBERS DECEASED 161 CLUB CANCELLED 0 OTHER 1,230 TOTAL 1,391	533 CLUBS OF 738 ADDED 1 OR MORE NEW MEMBERS	GENDER DISTRIBUTION MALE 22,924 (75.47%) FEMALE 7,432 (24.47%) NON BINARY 0 (0.00%) PREFER NOT TO ANSWER 17 (0.06%)
	CLICK HERE FOR CUMULATIVE MEMBERSHIP DATA	TOTAL FAMILY UNIT MEMBERS 9,654 FAMILY MEMBERS PAYING HALF DUES 5,332